

# Consent Decree Update

for Texas Association of Clean Water Agencies

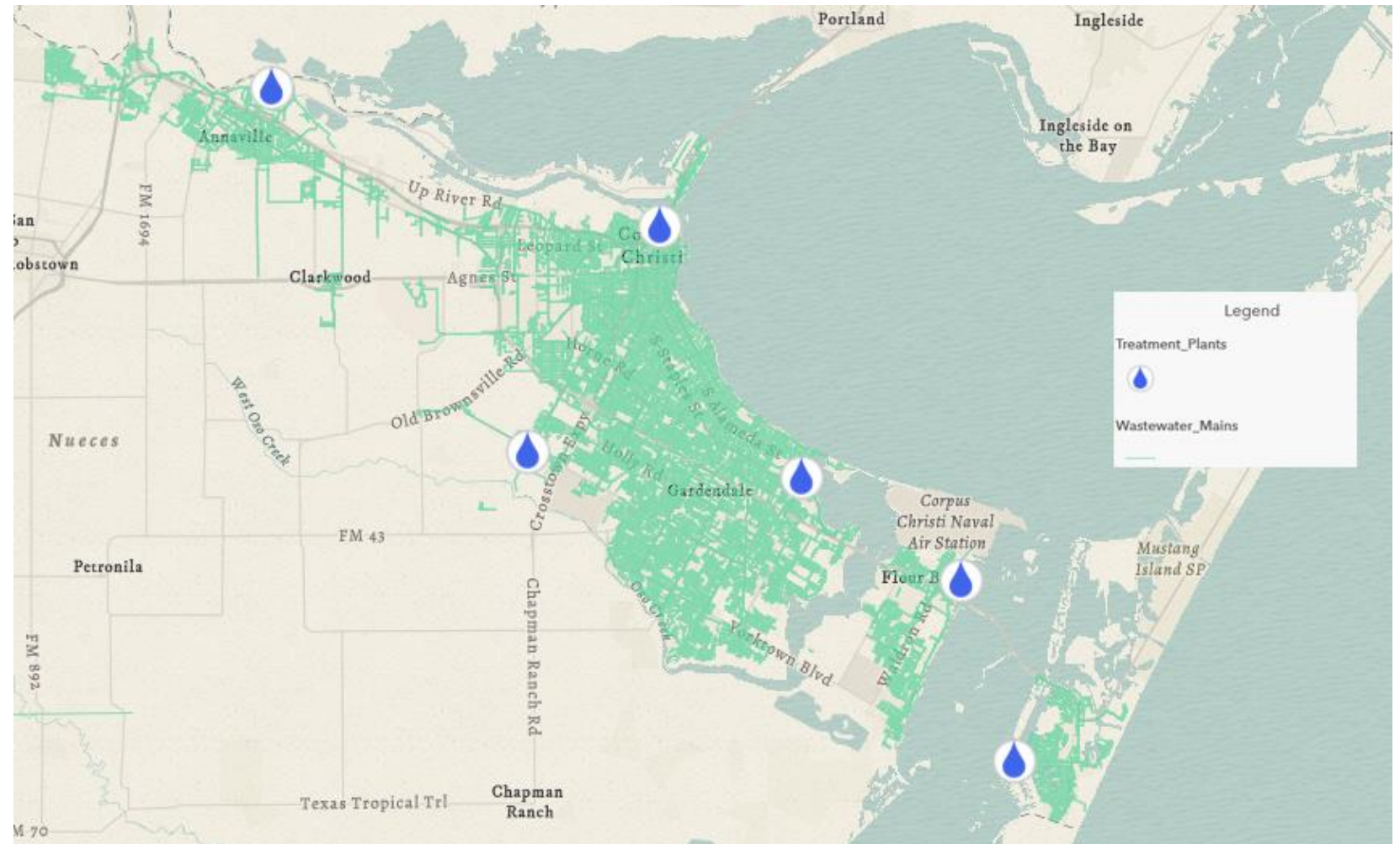
Nicholas J. Winkelmann, P.E.

January 26, 2023



# Overview

- Background.
- Benchmarks.
- Progress.
- Implementation.
- Planning.
- Budget.
- Take Home Tips.

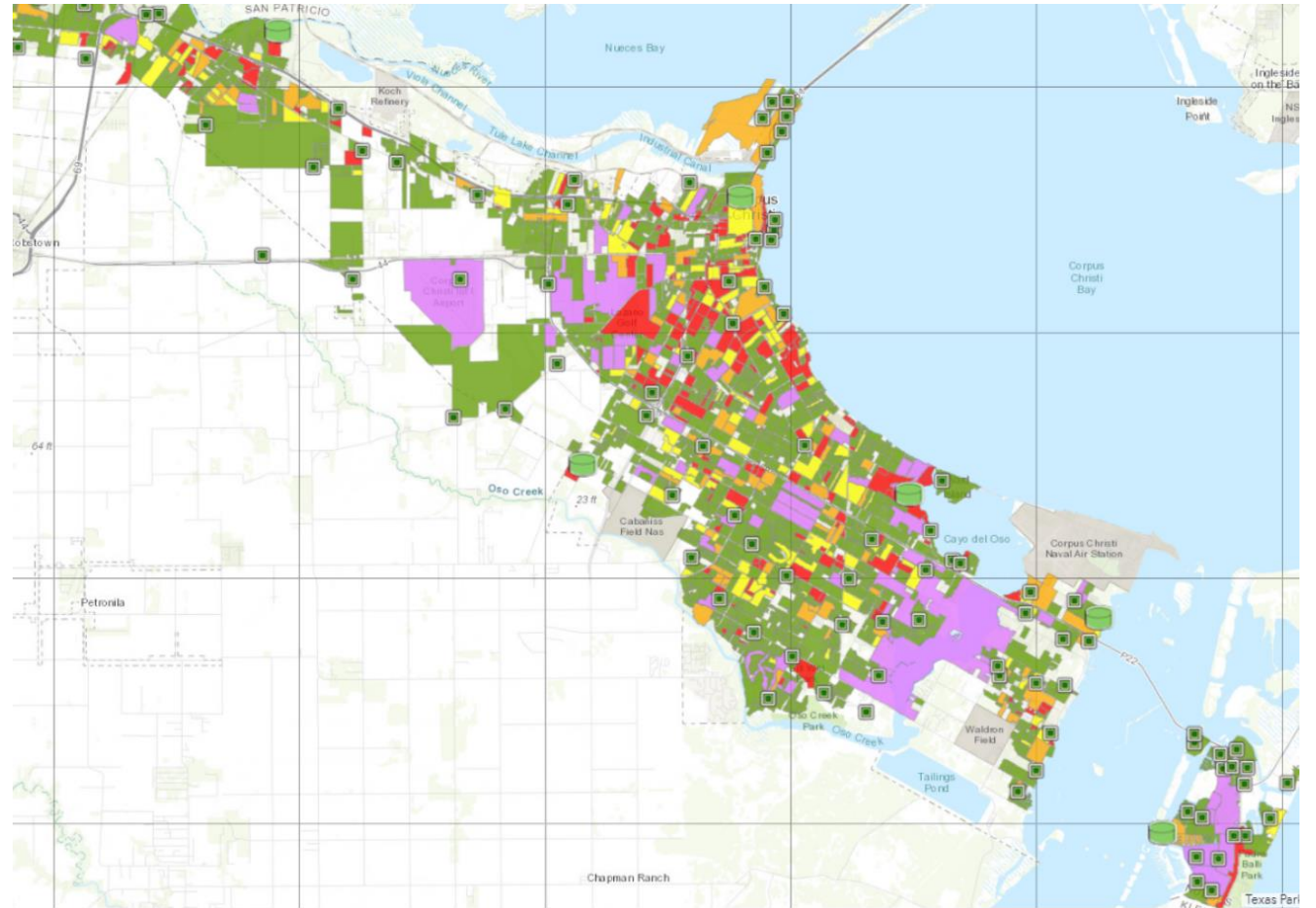


# Background

- CCW is two years into the 15-year Consent Decree Agreement with Environmental Protection Agency (EPA) and Texas Commission on Environmental Quality (TCEQ), which began on January 11, 2021.
- Programs and efforts to address various benchmarks for the condition and capacity assessment of the wastewater system involve both CCW experts and professional contractors.

# Compliance Programs and Processes

- Sanitary Sewer Overflow Review Workgroup.
- System-Wide Inspection and Cleaning.
- City-Wide Wastewater Line Replacement and IDIQ Contracts.
- Education and Outreach.
- Consent Decree Meetings.



# Benchmarks

| Specification   | Timeline        |
|---|-----------------|
| <ul style="list-style-type: none"><li>• Inspect all ARV's and force mains.</li></ul>  | By January 2023 |
| <ul style="list-style-type: none"><li>• Inspect all lift stations.</li><li>• Clean and inspect all small diameter gravity mains in priority neighborhoods.</li><li>• Inspect all manholes associated with large diameter gravity mains.</li></ul> | By January 2025 |
| <ul style="list-style-type: none"><li>• Complete all small diameter main priority projects.</li></ul>   | By July 2027    |

# Year 1 and 2 Total Completion Rate

| <b>Gravity Mains (1,154 Miles)</b> | <b>Target</b> | <b>Completed</b> |
|------------------------------------|---------------|------------------|
| Clean                              | 299 Miles     | 414 Miles        |
| Inspect                            | 215 Miles     | 294 Miles        |

| <b>Other Inspections</b> | <b>Target</b> | <b>Completed</b> |
|--------------------------|---------------|------------------|
| Manholes                 | 3,912         | 7,667            |
| Force Mains              | 138           | 138              |
| ARV's                    | 244           | 244              |
| Lift Stations            | 52            | 95               |

# Implementation

- CCTV - CCW and Contractor.
- Smoke Testing - CCW professionals only.
- Manhole Rehabilitation - CCW and Contractor.
- Pipe Bursting - Contractor Only.
- Manhole Replacement - CCW and Contractor.
- Line Replacement and Install - CCW and Contractor.
- Lift Station Maintenance - CCW professionals only.



# IDIQ Contract Planning

|        | <b>Utility</b>       | <b>Contract Value</b> |
|--------|----------------------|-----------------------|
| 1      | Wastewater           | \$5,000,000           |
| 2      | Water Small Diameter | \$5,000,000           |
| 3      | Water Large Diameter | \$5,000,000           |
| 4      | Wastewater Manhole   | \$2,000,000           |
| 5      | Wastewater           | \$8,000,000           |
| 6      | Water Small Diameter | \$5,000,000           |
| 7      | Water Large Diameter | \$5,000,000           |
| Total: |                      | \$35,000,000          |



# Current CIP Budgeting (Years 1 to 3)

| Fiscal Year 2023                | # of Projects | Total Dollars |
|---------------------------------|---------------|---------------|
| Wastewater Treatment Plants     | 13            |               |
| Wastewater Lift Stations        | 10            |               |
| Wastewater System Maintenance   | 7             |               |
| Wastewater Facilities and Other | 4             |               |
| Total:                          | 34            | \$346,649,266 |

# Take Home Tips

Many sewer clogs are caused by fats, oils and grease being poured down the drain.



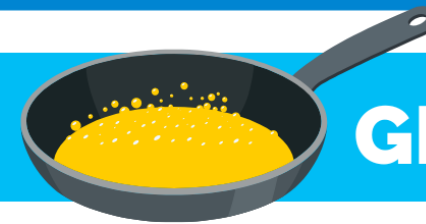
## FATS

RAW MEAT  
MEAT TRIMMINGS  
POULTRY SKIN  
BUTTER  
LARD  
CHEESES  
SOUR CREAM



## OILS

COOKING OIL  
SALAD DRESSING  
VEGETABLE OILS  
COCONUT OIL  
OLIVE OIL  
FRYER OIL  
MARGARINE



## GREASE

BACON RESIDUE  
CHICKEN BROTH  
BEEF STOCK  
GRAVY  
MAYONNAISE  
FRIED DRIPPINGS  
SOUPS

**Throw fats, oils and grease in the trash.  
Never put them down the sink.**

A decorative graphic consisting of four horizontal, wavy bands of varying shades of blue (from light cyan to a darker blue) that curve across the upper half of the slide.

Thank you!

